

SEQN: 119417 / T30 / HIPS
FROM:

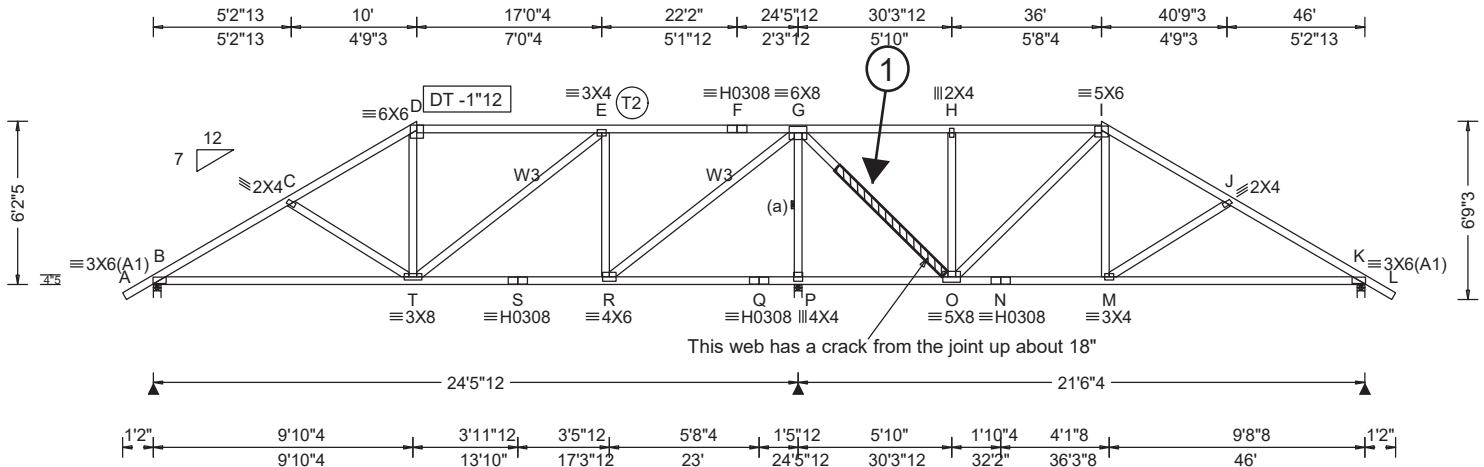
Ply: 1
Qty: 1
Wgt: 254.8 lbs

Job Number: 4352
LOT 12 CRIMSON FIELDS
Truss Label: A07

SIMPLE ROOF

DRW: ... / ...
08/19/2020

Repair for split web:



Loading Criteria (psf)

TCLL:	20.00
TCDL:	14.00
BCLL:	0.00
BCDL:	10.00
Des Ld:	44.00
NCBCLL:	0.00
Soffit:	2.00
Load Duration:	1.25
Spacing:	24.0 "

Wind Criteria

Wind Std: ASCE 7-16
Speed: 115 mph
Enclosure: Closed
Risk Category: II
EXP: C Kzt: NA
Mean Height: 15.00 ft
TCDL: 8.4 psf
BCDL: 6.0 psf
MWFRS Parallel Dist: 0 to h/2
C&C Dist a: 4.60 ft
Loc. from endwall: Any
GCpi: 0.18
Wind Duration: 1.33

Snow Criteria (Pg,Pf in PSF)

Pg: 26.0 Ct: 1.1 CAT: II
Speed: 20.0 Ce: 1.0
Lu: - Cs: 1.00
Snow Duration: 1.15

Code / Misc Criteria

Bldg Code: IBC 2018
TPI Std: 2014
Rep Fac: Yes
FT/RT/PT: 10(5)/10(0)/2(0)
Plate Type(s):
WAVE, HS

Defl/CSI Criteria

PP Deflection in loc L/defl L/#
VERT(LL): 0.045 E 999 360
VERT(CL): 0.092 E 999 240
HORZ(LL): 0.015 D - -
HORZ(TL): 0.030 D - -
Creep Factor: 2.0
Max TC CSI: 0.716
Max BC CSI: 0.626
Max Web CSI: 0.990
Mfg Specified Camber:

VIEW Ver: 19.02.02B.0122.16

▲ Maximum Reactions (lbs)

Loc	Gravity			Non-Gravity		
	R+	/R-	/Rh	/Rw	/U	/RL
B	1338	-	-	/690	-	/154
P	3114	-	-	/1337	-	-
K	1199	-	-	/626	-	-

Wind reactions based on MWFRS
B Brg Width = 3.5 Min Req = 1.5
P Brg Width = 3.5 Min Req = 2.9
K Brg Width = 3.5 Min Req = 1.5
Bearings B, P, & K are a rigid surface.

Maximum Top Chord Forces Per Ply (lbs)

Chords	Tens.Comp.	Chords	Tens. Comp.
A - B	67 0	G - H	158 -406
B - C	205 -1753	H - I	159 -409
C - D	205 -1258	I - J	156 -981
D - E	211 -1065	J - K	155 -1502
E - F	209 -801	K - L	67 0
F - G	209 -801		

Maximum Bot Chord Forces Per Ply (lbs)

Chords	Tens.Comp.	Chords	Tens. Comp.
B - T	1412 -66	P - O	199 -691
T - S	855 -10	O - N	703 0
S - R	855 -10	N - M	703 0
R - Q	199 -691	M - K	1198 -32
Q - P	199 -691		

Maximum Web Forces Per Ply (lbs)

Webs	Tens.Comp.	Webs	Tens. Comp.
C - T	106 -582	G - O	1541 -174
T - D	150 0	H - O	171 -698
T - E	626 0	O - I	17 -714
E - R	223 -1070	I - M	509 0
R - G	1914 -223	M - J	111 -594
G - P	460 -2961		

Lumber
Top chord: 2x4 DF-L(N) #1/#2;
T2 2x4 DF-L 2100f-1.8E;
Bot chord: 2x4 DF-L(N) #1/#2;
Webs: 2x4 DF-L Stud; W3 2x4 DF-L(N) #1/#2;

Bracing
(a) Continuous lateral restraint equally spaced on member. Or 2x6 #3 or better "T" reinforcement. 80% length of web member. Attached with 10d Box or Gun (0.128"x3",min.)nails @ 6" oc.

Loading
Truss designed for unbalanced snow loads.

Wind
Wind loads based on MWFRS with additional C&C member design.
Wind loading based on both gable and hip roof types.

Additional Notes
WARNING: Furnish a copy of this DWG to the installation contractor. Special care must be taken during handling, shipping and installation of trusses. See "WARNING" note below.

① Glue in place 2x4 scab 1-side, min. 6' long.
Nail 16d @ 6" O/C staggered.



10d/16d = Min. 0.131 x 3" gun nail

For GLUE use Construction Grade Adhesive, ASTM D-3498, similar to Builder's Choice 490 Subfloor & Construction adhesive, or Gorilla Wood Glue conforming to ASTM D-4236. Spread with trowel for full coverage.

CERTIFICATION IS FOR DESIGN CHECK OR REPAIR ONLY. EXISTING LOADS, DIMENSIONS AND FIELD CONDITIONS INFO WAS PROVIDED BY OTHERS.

REPAIR LUMBER TO BE DFL OR SP #2 OR BETTER